



NEW AGE METALS - PGM DIVISION

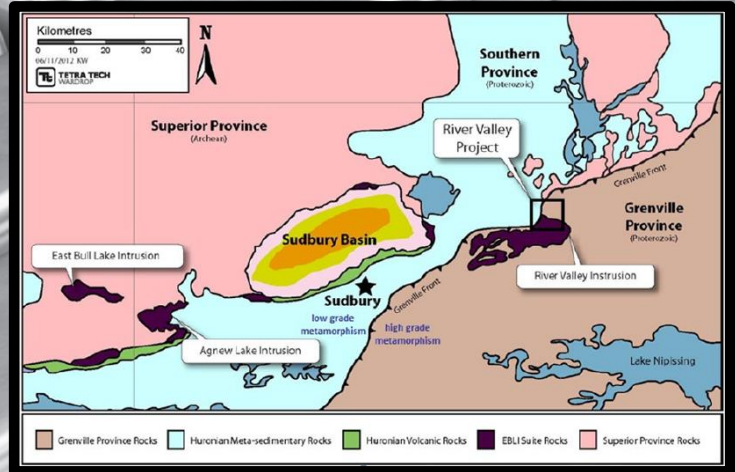
EXPLORATION AND DEVELOPMENT

SEEKING JOINT VENTURE PARTNERS

TSXV:NAM OTCQB:PAWEF FSE:P7J.F

River Valley PGM Project

- 100% Owned
- **Largest Undeveloped Primary PGM Resource in Canada**
- 2.5 million ounces of PGM's, in Measured plus Indicated mineral resource
- Located in River Valley, Ontario
- 60 km east of Sudbury and the Sudbury Mining Complex (a world class Ni-Cu-PGE operation)
- The company has spent ~\$30 million to date on exploration of the River Valley Project
- New high grade PGM zone discovered in 2015 and drilled in 2016.
- **Aggressive ongoing exploration program**



2012 Mineral Resource Summary

N143-101 Compliant Mineral Resource Estimate at Cut-Off Grade of 0.8 gpt PdEq - Effective May 1, 2012 (TetraTech)

Class	PdEq Cut-off (g/t)	Tonnes	Pd (g/t)	Pt (g/t)	Rh (g/t)	Au (g/t)	Ag (g/t)	Cu (%)	Ni (%)	Co (%)	PdEq (g/t)
Total Measured	0.80	25,584,850	0.63	0.23	0.022	0.04	0.55	0.06	0.02	0.003	1.46
Total Indicated	0.80	65,754,700	0.56	0.21	0.020	0.04	0.26	0.06	0.02	0.002	1.35
Total Measured+Indicated	0.80	91,339,550	0.58	0.22	0.021	0.04	0.34	0.06	0.02	0.002	1.38
Total Inferred	0.80	35,911,000	0.36	0.14	0.014	0.03	0.11	0.06	0.03	0.002	1.07

Contained Metal Contents

Class	PGM+Au (oz)	PdEq (oz)	PtEq (oz)	AuEq (oz)
Total Measured	742,130	1,168,450	555,400	823,710
Total Indicated	1,720,900	2,774,470	1,318,800	1,955,900
Total Measured+Indicated	2,463,030	3,942,920	1,874,200	2,779,610
Total Inferred	614,000	1,201,000	571,000	847,000

Contacts: Office 613-659-2777
trichardson@newagemetal.com
hbarr@newagemetals.com
info@newagemetals.com
Website: www.newagemetals.com

April 30, 2017 **TSXV:NAM**
Share Price \$0.09 **Options 2,272,221**
52 Week Range \$0.02 – 0.09 **Warrants 52,186,556**
Issued & OS 68,085,256 **Fully Diluted 122,554,033**
Market Capital = \$4.5 million