

GENESIS PROJECT

Platinum Group Metal and Base Metals
Project for Option/Joint Venture



The Genesis project is a Ni-Cu-PGE property located in the northeastern Chugach Mountains, 75 road miles north of the city of Valdez, Alaska. The project is within 3 km of the all-season paved Richardson Highway and a high capacity electric power line. The project is covered by 4,144 hectares of State of Alaska mining claims owned 100% by New Age Metals.

Past exploration has revealed the presence of chromite-associated platinum and palladium mineralization and stratabound Ni-Cu-PGE mineralization within steeply dipping magmatic layers of the Sheep Hill portion of the Tonsina Ultramafic Complex. The mineralized horizon has been identified in outcrop sampling for 850m along strike and a 40m true thickness. There has been no drilling on this district-scale project and the strike and depth extent of Ni-Cu-PGM mineralization remains untested.

Genesis is a road accessible, under explored, highly prospective and drill ready Palladium, Platinum, Nickel and Copper property located in the state of Alaska.



The identification of two different styles of PGE mineralization at Sheep Hill suggests that multiple mineralizing events have occurred. The parental magma for the Tonsina Ultramafic Complex contained highly anomalous concentrations of PGE and Ni. More exploration is required to define if a reef event has formed the stratabound magmatic sulfide mineralization and if the geochemical patterns caused by reef formation hosts economically significant Ni-Cu-PGE mineralization in the Tonsina Ultramafic Complex.

Left: Map location of the Genesis Project, Nelchina Mining District, Alaska

- Drill ready PGM-Ni-Cu reef style target with 2.4 g/t Palladium (Pd), 2.4 g/t Platinum (Pt), 0.96% Nickel (Ni), and 0.58% Copper (Cu).
- Metal grades are regular over multiple meter intervals, including 6 meters grading 804 ppb platinum and 1,018 ppb palladium, and 12 meters grading 5,938 ppm nickel.
- Two areas of banded chromite hosted in dunite and harzburgite on the Bernard Mountain portion of the Tonsina Ultramafic Complex host multiple ppm PGM and a sample of chromite hosted in the olivine websterite unit contains the high values for both Platinum (Pt) and Palladium (Pd) for a combined 5,340 ppb PGM. Outcrop sampling has returned values of 16-9,660 ppm Ni, 0.5-5,800 ppm Cu, 0-2,800 ppb Pt, 0-2,540 ppb Pd.

New Age Metals is seeking an Option/Joint Venture Partner to move the Genesis project forward. A NI 43 - 101 Report for this project is available on SEDAR. If you have questions regarding this project, please do not hesitate to contact us using the information below.

TSX.V : NAM
OTCQB : NMTLF
FSE : P7J.F



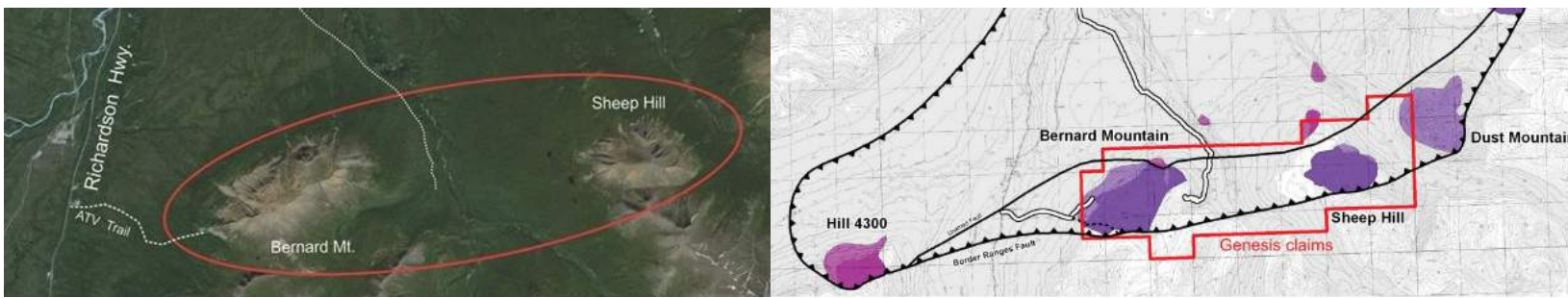
New Age Metals Inc. | Field Office
59 Burtch's Lane, Rockport
K0E 1V0, ON, CA



1-613-659-2773
info@newagemetals.com
<https://newagemetals.com>

Below Left: Genesis Projects Proximity to Highway

Below Right: General Geology of the Tonsina mafic-ultramafic complex, Nelchina Mining District. Purple colors denote ultramafic rocks, magenta colors denote mafic rocks.



As you can see in the graphic above, the Genesis Project is in very close proximity to a major highway. All State of Alaska mining claims are subject to a production royalty of 3% of net income from a mining operation beginning 3.5 years following commencement of commercial production. There currently are no unusual social, political or environmental encumbrances to mining on the project. No known mineral closures exist within or adjacent to the property. None of the claims covering the Genesis project has been surveyed by a registered land or mineral surveyor and there are no state or federal laws or regulations requiring such surveying.

Recommended Future Work : 3-Year Plan

Year 1:

Initial efforts at Genesis should focus on detailed geologic mapping (1:1,000 or better). This includes grid-based lithogeochemical sampling, 2D and 3D reinterpretation of previously completed airborne and ground geophysical surveys, and acquisition, interpretation and ground-truthing of hyperspectral imagery over the Tonsina Ultramafic complex and vicinity.

The focus of field efforts will be detailed geologic mapping and lithogeochemical sampling designed to locate and define both bedded and chromite-related Cu-Ni-PGE mineralization to a degree sufficient to target drilling in year 2. Total estimated cost of this program is approximately \$500,000.

Year 2:

Exploration recommended for year 2 will be focused on initial scout drilling of one or more targets as refined by year one efforts.

Approximately 2,500m of drilling is included in this program. Drill support will be from a contract tent camp capable of supporting 10-12 persons. All drill core will be logged, photographed, and sawed with one-half of the core remaining in archive, the other half being shipped for geochemical analysis. All analytical work will include Pt+Pd+Au by fire assay and multi-element IPC-AES analysis with 4-acid digestion. Total estimated cost of this program is approximately \$1,000,000.

Year 3:

Exploration recommended for year 3 will be focused on definition drilling of the most promising target drilled in year 2. The goal of year 3 efforts will be to advance at least one target to the inferred resource stage.

Approximately 5,000m of drilling is included in this program. Drill support will be from a contract tent camp capable of supporting 10-12 persons.

Drill core and analytical work efforts will be similar to that in year 2. Total estimated cost of this program is approximately \$1,500,000.

New Age Metals is seeking an Option/Joint Venture Partner to move the Genesis project forward. A NI 43 - 101 Report for this project is available on SEDAR. If you have questions regarding this project, please do not hesitate to contact us using the information below.